

GE Heat & Cool Unit



GE® ENERGY STAR® 230/208 Volt Built-In Room Air Heat/Cool Unit



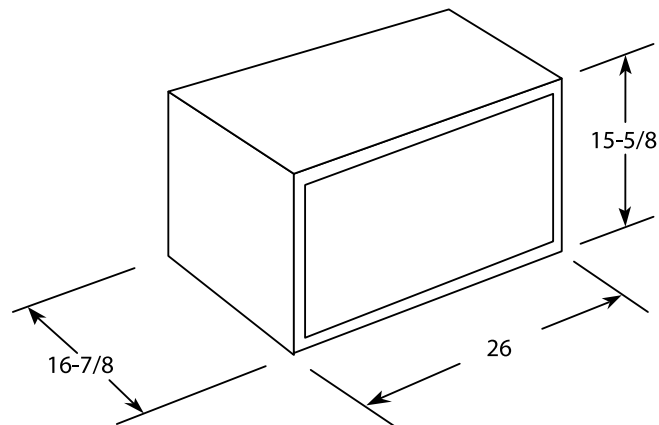
AJHS10DCC
GE® 230/208 Volt Built-In Heat Pump

Features and Benefits

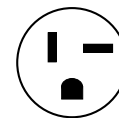
- 10,000/9,800 BTU
- 9,700/9,500 BTU pump
- 11,600/9,500 BTU strip
- 9.5/9.5 EER
- 230/208 Volts
- Mechanical controls
- Variable position thermostat
- Four-way air direction
- Up-front, washable air filter
- 2 cool/2 heat/2 fan only speeds
- Model AJHS10DCC – Soft Gray

0143200 Heat/Cool Unit

0143201 Sleeve



Perpendicular



230/208V
20 Amp



imagination at work



Total volume and shelf area are calculated by the Association of Home Appliance Manufacturers' standards.



Listed by Underwriters Laboratories

Wall Case Dimensions and Installation Information (in inches)

Note: When installing slide-out chassis units in through-the-wall applications, keep louvers free. Do not restrict air flow areas.

Refrigerators

New, Improved Models:

All refrigerators now have more efficient compressors & fan motors, plus new insulation to meet current codes!



HOTPOINT 15.7 Cubic Foot Frost-Free Recessed Handles

- ◆ Upfront Temperature Controls
- ◆ Recessed Handles
- ◆ Two Adjustable Wire Shelves—Maximize usable storage space
- ◆ Two Fixed Gallon Door Storage Shelves
- ◆ Two Vegetable/Fruit Crispers
- ◆ Equipped for optional automatic icemaker
- ◆ Deluxe Quiet Design
- ◆ NeverClean™ Condenser—Condenser coils are encased, so they don't require cleaning in normal operating environments

Dimensions

Height: 61-3/4"
Width: 28"
Depth: 31"
Depth (w/o handle): 29-1/8"
Depth with door open 90°: 54-7/8"

Weight

Approx. 147 lbs.
Approx. Ship 166 lbs.

0143069 White
0143076 White* With Ice Maker Installed

*This model comes with standard handles



HOTPOINT 18.0 Cubic Foot Frost-Free

- ◆ Upfront Temperature Controls
- ◆ Vegetable/Fruit Crispers
- ◆ Equipped for optional automatic icemaker
- ◆ Two Adjustable Wire Shelves—Maximize usable storage space
- ◆ Gallon Door Storage
- ◆ Contoured Doors—Create a high-fashion look with gently rounded doors and edges
- ◆ Deluxe Quiet Design—Significantly reduces operating noise
- ◆ NeverClean™ Condenser—Condenser coils are encased, so they don't require cleaning in normal operating environments

Dimensions:

Height: 66-5/8"
Width: 29-1/2"
Depth: 32-1/8"
Depth (w/o handle): 30-1/4"
Depth with door open 90°: 58-1/8"

Weight

Approx. 198 lbs.
Approx. Ship 223 lbs.

0143054 White



HOTPOINT

18.2 Cubic Foot Frost-Free

- ◆ Adjustable Glass Shelves—Lets consumers maximize usable storage space
- ◆ Upfront Temperature Controls—Are positioned up front, close at hand, for maximum convenience and ease of use
- ◆ Factory-Installed Icemaker—Makes ice automatically, ensuring a ready supply
- ◆ Two clear vegetable/fruit crispers
- ◆ Two full width adjustable glass shelves
- ◆ Can storage shelf
- ◆ Clear snack pan
- ◆ Two fixed gallon door shelves
- ◆ Square Doors—Classic design
- ◆ NeverClean™ Condenser

Dimensions

Height: 67-3/8"
 Width: 28"
 Depth: 32-3/8"
 Depth (w/o handle): 30-1/2"
 Depth with door open 90°: 56-3/8"

Weight:

Approx. 203 lbs.
 Approx. Ship 228 lbs.

0143065 White w/Ice Maker



19.9 Cu. Ft. Side by Side Refrigerator

- ◆ Adjustable Wire Shelves—Lets consumers maximize usable storage space
- ◆ Upfront Electronic Dial Temperature Controls—A simple turn of knob regulates interior temperatures
- ◆ Sealed Vegetable / Fruit Crisper
- ◆ Sealed Deli Pan—Provides convenient storage for cheeses and luncheon meats
- ◆ Gallon Door Storage—Makes room for milk and any other gallon size containers
- ◆ Adjustable Wire Shelves—Provide strong support and slide out with ease
- ◆ FrostGuard™ Technology—Protects frozen items from freezer burn by monitoring freezer door openings and defrosting only when needed
- ◆ 1 Year Warranty – parts & labor

Dimensions

Height: 67-1/2"
 Width 31-1/2"
 Depth: 33-5/8"
 Depth (w/o handle): 31-1/4"
 Depth with door open 90°: 47-3/8"

Weight:

Approx.: 285 lbs.
 Approx. Ship: 306 lbs.

0143080 White



15.5 Cu. Ft.
Top-Freezer Refrigerator
Model#: HTH16BBXRWW

Approximate Dimensions (HxDxW):
61 3/4 in x 31 in x 28 in

- ◆ Upfront Temperature Controls—Features easy-to-reach, easy-to-read temperature controls
- ◆ Adjustable Wire Shelves—Maximize usable storage space
- ◆ Gallon Door Storage—Makes room for milk and any other gallon size containers
- ◆ Vegetable/Fruit Crispers—For easy storage of your fruits and vegetables
- ◆ NeverClean™ Condenser—Condenser coils are encased, so they don't require cleaning in normal operating environments
- ◆ Deluxe Quiet Design—Significantly reduces operating noise

Warranty Information:

- ◆ Parts Warranty: Limited 1-year entire appliance
- ◆ Labor Warranty: Limited 1-year entire appliance
- ◆ Warranty Notes: See written warranty for full details
- ◆ Warranty Notes: See written warranty for full details

0143140 White



18.0 Cu. Ft.
Top-Freezer Refrigerator
Model#: GTH18DCXRWW

Approximate Dimensions (HxDxW):
66 5/8 in x 32 1/8 in x 29 1/2 in

- ◆ Upfront Temperature Controls—Features easy-to-reach, easy-to read temperature controls
- ◆ Factory-Installed Icemaker—Makes ice; automatically ensuring a ready supply
- ◆ Sealed Vegetable/Fruit Crispers—Help preserve fruits and vegetables
- ◆ Spillproof Freezer Floor—Seamless design offers easy cleanup
- ◆ Gallon Door Storage—Makes room for milk and any other gallon size containers
- ◆ NeverClean™ Condenser—Condenser coils are encased, so they don't require cleaning in normal operating environments
- ◆ Deluxe Quiet Design—Significantly

Warranty Information:

- ◆ Parts Warranty: Limited 1-year entire appliance
- ◆ Labor Warranty: Limited 1-year entire appliance
- ◆ Warranty Notes: See written warranty for full details

0143141 White - w/Ice-Maker

0143143 White - w/out Ice-Maker

Refrigerators



22.0 Cu. Ft.

Side-By-Side Refrigerator with Dispenser
Model#: GSH22JFXWW



Approximate Dimensions (HxDxW):
67 1/2 in x 33 5/8 in x 33 1/2 in

- ◆ External Temperature Controls with Child Lock -Combines the ease of 0-9 temperature settings, with the sophistication of electronic controls
- ◆ Adjustable Humidity Vegetable/Fruit Crispers—Provide ideal storage environment for fruits and vegetables
- ◆ Adjustable Temperature Deli Drawer—Keep meats and cheeses fresher, longer
- ◆ Snack Pan—Conveniently stores re-wrapped meats, cheeses and other snacks
- ◆ Adjustable Gallon Door Bins—Provides additional storage space for milk and other gallon-size containers
- ◆ Adjustable Spillproof Glass Shelves—Raised edges help contain spills to make clean up quick and easy
- ◆ GE Water Filtration System—Delivers clean great-tasting water and ice through the LightTouch! Dispenser

Warranty Information:

- ◆ Parts Warranty: Limited 1-year entire appliance
- ◆ Labor Warranty: Limited 1-year entire appliance
- ◆ Warranty Notes: See written warranty for full details

0143142 White



HOTPOINT

15.6 Cu. Ft.

Top-Freezer Refrigerator
Model#: HTR16ABSRWW

Approximate Dimensions (HxDxW):
61 3/4 in x 29 1/8 in x 28 in

- ◆ Upfront Temperature Controls—Are positioned up front, close at hand, for maximum convenience and ease of use
- ◆ Gallon Door Storage—Makes room for milk and any other gallon size containers
- ◆ Adjustable Wire Shelves—Provide strong support and slide out with ease
- ◆ Vegetable/Fruit Crisper—For easy storage of fruits and vegetables
- ◆ NeverClean™ Condenser—Condenser coils are encased, so they don't require cleaning in normal operating environments
- ◆ Deluxe Quiet Design—Significantly reduces operating noise
- ◆ Recessed Handles—Color-matched recessed door handles reflects the latest in European style and appearance

Warranty Information:

- ◆ Parts Warranty: Limited 1-year entire appliance
- ◆ Labor Warranty: Limited 1-year entire appliance
- ◆ Warranty Notes: For models produced on or after

January 1, 2006; See written warranty for full details

0143069 White



0143069 is not an Energy Star refrigerator



20.0 Cu. Ft. Side by Side Refrigerator w/Water & Ice

- ◆ External Temperature Controls with Child Lock—Combines the ease of 0-9 temperature settings, with the sophistication of electronic controls
- ◆ Sealed Vegetable / Fruit Crisper—Provides easy storage for your fruits and vegetables
- ◆ Sealed Deli Drawer—Provides convenient storage for cheeses and luncheon meats
- ◆ Adjustable Gallon Door Bins—Provides additional storage space for milk and other gallon-size containers
- ◆ FrostGuard™ Technology—Protects frozen items from freezer burn by monitoring freezer door openings and defrosting only when needed
- ◆ Factory installed icemaker (cubes & crushed ice) & Light Touch Dispenser
- ◆ AutoEnergy Saver—Senses freezer and fresh door openings and adjusts refrigeration operation cycles accordingly

Dimensions

Height: 67-1/2"
 Width: 31-1/2"
 Depth: 33-5/8"
 Depth (w/o handle): 31-1/4"
 Depth with door open 90°: 47-3/8"

Weight

Approx. 285 lbs.
 Approx. Ship 306 lbs.

0143058 White

Outdoor Improvements

Anchors & Set-Up Material

Doors & Windows

Coatings & Cleaners

Appliances



0143095 Universal Icemaker Kit

Universal Icemaker Kit

Full one-year warranty.

- 0143096 IM5SS Fits all post '01 side-by-sides that did not already have icemaker installed.
- 0143095 IM4A Fits all post '01 top freezers, model year bottom freezers and post '01 bottom freezers.
- 0143091 IM6 Service Icemaker Kit; Kit contains parts for any GE/Hotpoint model. Backward compatible on everything except 21-22 cu. ft. model year bottom freezers.

Flair-It Icemaker Valve & Tee

Use with polybutylene pipe. Due to copper valve, teflon tape is recommended.



- 0164374 Valve Only
- 0164330 Tee Only

Genova PRODUCTS

Tools & Hardware

Carpet & Flooring



Brass Drain & Icemaker Valve

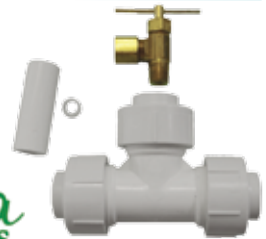
Compression straight valve.
 1/2" PEX x 1/4" OD.
 0168219

Icemaker Kit

5/8" OD tee and 1/4" OD valve assembly.

0166220

Genova PRODUCTS



Electrical

Plumbing

Icemaker Hookup Kits



25' poly tubing & 1 saddle valve
 0143083

- 16' copper pipe & 1 saddle valve
- 0143085



No-Burst Icemaker Connector

Highest burst strength available. Each foot contains 250 feet of stainless steel wire. Exceptional flexibility for easy installation. Won't kink or crease, even in the tightest applications. Exceeds all requirements for flexible water connectors as defined by ASME A112.18.6 and CSA B125.

0375009 60"



Towing & Safety

Heating & Cooling

Gas Ranges

HOTPOINT

30" Free-Standing Standard Extra Large Oven with Porcelain Enamel Door



- ◆ Extra-Large Oven Capacity—Provides a large oven interior ideal for cooking more items at once
- ◆ All Purpose Burners—Deliver a wide range of heat output ideal for most cooking requirements
- ◆ Standard Grates—Provide a sturdy and convenient cookware surface for everyday cooking
- ◆ Porcelain Upswept Cooktop—Features raised edges to help contain spills and make clean-up easy
- ◆ Lift-Up Cooktop—Cooktop lifts up for easy access to porcelain-enameled subtop
- ◆ Easy Clean Subtop—Porcelain enameled subtop collects spills and messes for easy cleaning

Dimensions Weight:

Height: 44"
Width: 30"
Depth: 26-1/2"

Approx. 145 lbs.
Approx. Ship Wt. 165 lbs.

0143072 White

30" Free-Standing Standard Extra Large Oven with Window & Clock

HOTPOINT



- ◆ Extra-Large Oven Capacity—Provides a large oven interior ideal for cooking more items at once
- ◆ All Purpose Burners—Deliver a wide range of heat output ideal for most cooking requirements
- ◆ Electronic Clock And Timer—Features a convenient digital clock and easy-to-use timer with an audible signal to help coordinate cooking times in the kitchen
- ◆ Standard Grates—Provide a sturdy and convenient cookware surface for everyday cooking
- ◆ Porcelain Upswept Cooktop—Features raised edges to help contain spills and make clean-up easy
- ◆ Lift-Up Cooktop—Cooktop lifts up for easy access to porcelain-enameled subtop

Dimensions Weight:

Height: 46-1/2"
Width: 30"
Depth: 26-1/2"

Approx. 155 lbs.
Approx. Ship Wt. 175 lbs.

0141005 White on White

E-7

Electric Ranges

HOTPOINT

30" Electric Range Standard Super-Large Oven Capacity

- ◆ Super-Large Oven Capacity—Provides an impressively large oven interior for cooking more dishes and large meals at one time
- ◆ Coil Heating Elements—Provides consistent and even heat on the cooktop with a plug-in element that is removable for easy cleaning
- ◆ Porcelain Upswept Cooktop—Features raised edges to help contain spills and make clean-up easy
- ◆ Chrome Drip Bowls—Contain minor spills and are removable for easy cleaning
- ◆ Two Oven Racks—Feature a durable construction to help accommodate any size or type of cookware
- ◆ Removable Full Width Storage Drawer—This convenient drawer can be used for storing cookware or kitchen accessories

Dimensions

Height: 46-1/2"
Width: 29-7/8"
Depth: 26-3/8"
(including door handle)

Weight

Approx. 135 lbs.
Approx. Ship 155 lbs.



0143074 White (Shown above)
0141006 White w/Window & Clock (Shown in inset on left)

Important: No Pigtail Supplied with Electric Range



HOTPOINT

30" Electric Range, Super-Large Self-Cleaning Oven

- ◆ Self-Clean Oven—Conveniently cleans the oven cavity without the need for scrubbing
- ◆ Super-Large Oven Capacity—Provides an impressively large oven interior for cooking more dishes and large meals at one time
- ◆ Coil Heating Elements—Provides consistent and even heat on the cooktop with a plug-in element that is removable for easy cleaning
- ◆ Electronic Oven Controls—One-touch electronic pads are easy-to-use and allow for simple oven operation
- ◆ Standard Window—Provides a convenient viewing area to check the progress of food
- ◆ Frameless Glass Oven Door—Offers an easy-to-clean and stylish design that blends seamlessly into existing cabinetry

Dimensions

Height: 46-1/2"
Width: 29-7/8"
Depth: 26-3/8"
(including door handle)

0143063 White

Weight

Approx. 150 lbs.
Approx. Ship 170 lbs.

Outdoor Improvements
 Anchors & Set-Up Material
 Doors & Windows
 Coatings & Cleaners
Appliances
 Tools & Hardware
 Carpet & Flooring
 Electrical
 Plumbing
 Towing & Safety
 Heating & Cooling



GE Electric Range Standard w/ Super-Large Oven



- ◆ Standard Clean Oven—Offers a traditional oven design that requires hand cleaning
- ◆ Super-Large Oven Capacity—Provides an impressively large oven interior for cooking more dishes and large meals at one time
- ◆ Coil Heating Elements—Provides consistent and even heat on the cooktop with a plug-in element that is removable for easy cleaning
- ◆ ClearView™ Window—Features a convenient viewing area to check the progress of food
- ◆ Dual Element Bake—Alternates the upper broiling element and the lower baking element for even heating and optimal baking results
- ◆ Electronic Clock And Timer—Features a convenient digital clock and easy-to-use timer with an audible signal to help coordinate cooking times in the kitchen

Dimensions

Height: 46-7/8"
 Width: 29-7/8"
 Depth: 26-1/4"
 (including door handle)

Weight

Approx. 138 lbs.
 Approx. Ship 158 lbs.

0141010 White on White



30" Electric Range w/ Self-Cleaning Smooth Top

- ◆ Self-Clean Oven—Conveniently cleans the oven cavity without the need for scrubbing
- ◆ Super-Large Oven Capacity—Provides an impressively large oven interior for cooking more dishes and large meals at one time
- ◆ QuickSet III Oven Controls—Feature an easy to use design that lets you set precise cooking temperatures
- ◆ Ribbon Heating Elements—Provide powerful heat beneath a smooth glass surface to ensure even heat and fast warm-up times
- ◆ Ceramic Glass Cooktop—A smooth cooktop surface makes cleaning quick and easy
- ◆ ClearView™ Window—Features a convenient viewing area to check the progress of food
- ◆ Dual Element Bake—Alternates the upper broiling element and the lower baking element for even heating and optimal baking results

Dimensions

Height: 46-7/8"
 Width: 29-7/8"
 Depth: 27-3/8"

Weight:

Approx. 146 lbs.
 Approx. Ship 166 lbs.

0143049 White

E-9



Specifications Subject to Change without Notice

Both Hoods Below Feature:

- ◆ Powerful UL listed 115V motor, single speed
- ◆ 100 CFM
- ◆ Durable powder coat paint resists chipping, scratching
- ◆ Convenient front mounted fan and light controls (rocker switches)
- ◆ 8" x 8" grease filter of washable aluminum mesh
- ◆ Enclosed light illuminates cooking surface

Range Hood w/Vertical Exhaust

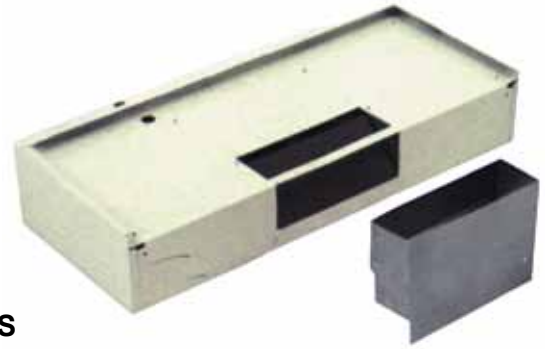


PR SERIES

Vertical 5" round outlet.

- 0422604** 30" White
- 0422605** 42" White
- 0422606** 30" Almond
- 0422607** 42" Almond

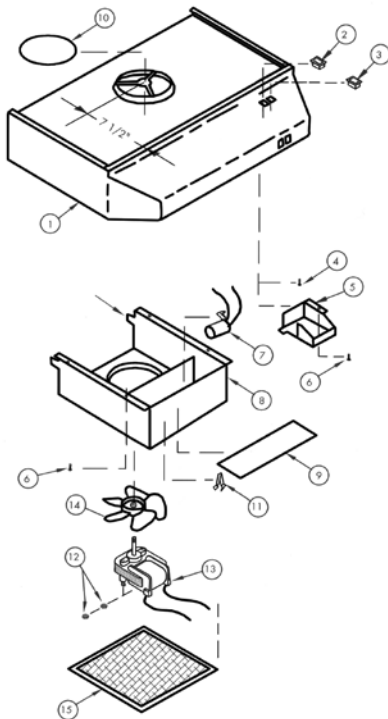
Combo Lighted Range Hoods Side or Roof Exhaust



PC SERIES

Combination air exhaust through sidewall or roof—outlet measures 3" x 8"

- 0422611** 30" Almond
- 0422612** 30" White
- 0422615** 42" Almond
- 0422616** 42" White
- 0422620** Transition Piece—Converts Rectangular Outlet for Round Duct C0579-00



REPLACEMENT PARTS		
Part Key	Part Number	Description
2	0420525	New Lamp Switch, Rocker-type, Black BL1196-00
2	0420526	New Lamp Switch, Rocker-type, White BL1197-00
3	0420527	New 1-Sp. Fan Switch, Rocker-type, White BL1195
3	0420528	New 1-Sp. Fan Switch, Rocker-type, Black BL1194
9	0422630	Light Lens, 3-1/16" x 9-1/2" Flat BCC0179-00
13	0420103	Replacement Motor BCD0275-00
14	0421399	Fan Blade BCD0409-00 for PC Series
14	0421400	Fan Blade BCD0311-10 for PR Series
15	0422623	Grease Filter, 8" x 8" - Aluminum BCC0246-00

NEW STYLE

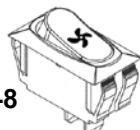
- 0420517** 2-Wire Rotary Switch - BCB0164-00
- 0420520** Switch, Rocker-type, Black BLO108-00*
- 0420522** Switch, Rocker-type, White BLO816-00*

*Without light or fan symbol on switch

0420525-6



0420527-8



Island Range Hood



115V, single speed motor fan and light with 5" dia. vertical exhaust. 12" depth x 30" width. Rocker switches. 100 CFM

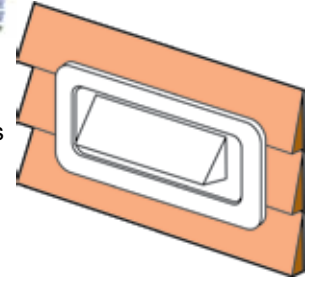


0422635 White

Hood Exhaust Vent for Lap Siding



Professionally finished look with lap siding. Simple to install, saves time and lowers cost. Reduces leaks. White.



0420500 V2213-00

Louvered Range Hood Vent



Louvered design, 1-3/4" inlet, white color. 3-1/3" x 10-1/2" RO.

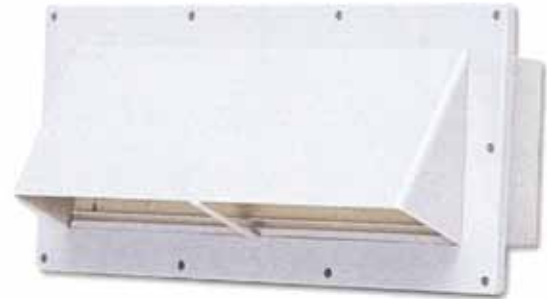


0420510 V2018-01

Louvered Range Hood Vent



Weatherproof w/ lockable damper. Heavy plastic construction. 1-3/4" inlet.



Colonial White. 3-1/3" x 10-1/2" RO. 12/Ctn.

0420509 V2111-11

Sidewall Exhaust Fans



0420710 115V Sidewall Fan, Mill Finish Exterior, White Interior, Fits 2-3/4"-4" wall thickness. V2215-11

Replacement Parts

- 0420711** Sterling Grille - V0564-37
- 0420709** White Grille - V0564-46
- 0420703** Screws for Grille (3.5" Model) - V0148-02
- 0421401** Fan Blade - BVA0312-00
- 0221802** Pressure Switch - BV0140-03
- 0262000** Sidewall Chain - BV0144-00
- 0420103** Motor, 120V, No Plug - BVD0275-00

Range Burners and Knobs

Pans and Rings for G.E. & Hotpoint Ranges



A: Burner Elements

- 0143037 6" High-Rise
- 0143038 8" High-Rise

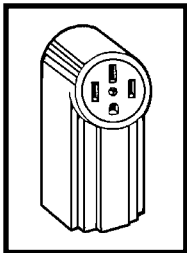
B: Burner Pans

- 0143030 6" Pan
- 0143031 8" Pan

C: Burner Rings

- 0143032 6" Ring
- 0143033 8" Ring

Range Receptacle



Surface mount power receptacle 3 pole, 4-wire, 50-amp, 125/250-volt range receptacle with "Quick-Lok" terminals. 50/Ctn.

0224201 Hubbell Range



Burner Elements



Authentic replacements for over 30 million supplied as OEM equipment since 1962. 3-turn coil, coil support & medallion. 250V, 1250-W. 250/Ctn.

- 0143040** 6" Burner Element
- 0143042** 8" Burner Element

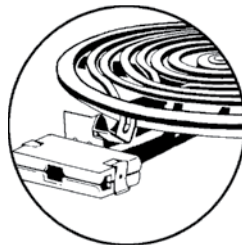
Combo Pan & Ring



This one-piece combination pan and ring is used with single coil plug-in electric range surface elements.

- 0143044** Small; 250/Ctn.
- 0143046** Large; 250/Ctn.
- 0143043** 8" for Hotpoint

G.E. & Hotpoint Surface Elements



Chromolox double coil hard wire 5-turn and 6-turn elements. Fits Hotpoint and GE models. Comes without ring.

Surface Elements

- 0143037** 6" High-Rise
- 0143038** 8" High-Rise

Range Cord

Replacement cord for all ranges having a 1-1/8" power supply entrance.

Two #8 and two #6 conductors with molded cap and terminal plugs. 50 amp, 4' long. 12/Ctn.



0220306

Oven Dial for Gas T-Stat



BJWA, BJ, U Series. Dials for "D" stem application. Mounts four ways. Low 250° to 550°F plus broil. Clockwise to off.

0141508 Black

Dishwashers



GE Pots-And-Pans Built-In Dishwasher



- ◆ Meets 2007 **ENERGY STAR**® Criteria—Can reduce utility bill by using less water to get dishes clean
- ◆ 4-level PowerScrub™ wash system—Four wash levels quietly and efficiently scrub dishes clean
- ◆ HotStart™ Option—Preheats water before the main wash cycle for dependable performance every time
- ◆ Piranha™ Hard Food Disposer—Grinds leftover food into small particles that are easily washed away
- ◆ Pots and Pans Cycle—Scours off baked-on food with a wall of water
- ◆ Heated Dry Option—Circulates warm air to quickly and gently dry dishes



G.E. dishwashers save water by 45% - 65% over hand washing.

Dimensions

Height: 34" Depth: 25-3/4"
 Width: 24"

Weight:

Approx. weight: 90 lbs.
Approx. shipping weight: 100 lbs.

- 0143112** Black
- 0143113** White (*shown on left*)

HOTPOINT Dishwashers

- ◆ 100% Water Filtration with ExtraFine™ Filter—Clean water helps deliver clean dishes
- ◆ Hot PreWash Option—Preheats water before the main wash cycle for excellent performance time after time
- ◆ QuietPower™ Motor—Runs quietly and efficiently to keep the kitchen peaceful and quiet



- 4-level PowerScrub™** wash system
 - Durable tub and door liner—Resists chipping and staining, holding up to heavy use.
 - Piranha™ Hard Food Disposer—Grinds leftover food into small particles that are easily washed away
 - 5-level PowerScrub™** wash system
 - with PowerShower—5 wash levels and redesigned wash arms direct water precisely for a quiet and efficient clean.
 - Push-button controls—Operate with ease
 - Pots and Pans Cycle—Scours off baked-on food with a wall of water
- 0143087** Black
0143090 White
- 0143089** Black
0143092 White (*shown on right*)

Dimensions

Height: 34" Depth: 25-3/4"
 Width: 24"

Weight:

Approx. weight: 90 lbs.
Approx. shipping weight: 100 lbs.



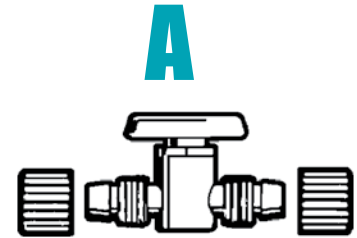
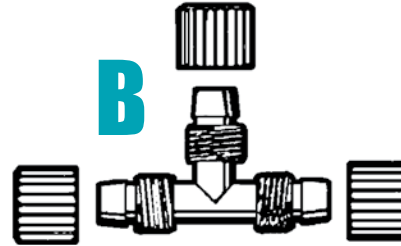
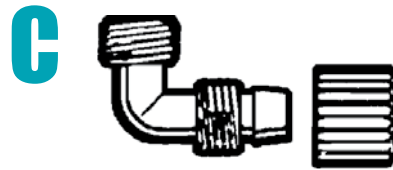
Hotpoint dishwashers save water by 45% - 65% over hand washing.

Connectors

Dishwasher Hook-Up Kit

Contains one each of the following:

- A** Straight Stop Valve:
1/2" P x 1/2" P
- B** Tee
1/2" P x 1/2" P x 1/2" P
- C** Male Elbow
1/2" P x 3/8" MPT
w/tapered threads



0164390

Dishwasher Drain Air Gap

For automatic dishwashers. The dishwasher air-gap eliminates pressure build-up and possible contamination of the home's potable water supply. Constructed of durable plastic, the "Y" shaped air-gap unit has an intake and discharge tube, between which is a trouble-free air release valve that automatically provides anti-siphon protection. 5/8" OD Inlet x 7/8" OD Outlet.



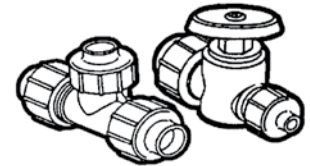
0375006

Universal Dishwasher Hookup

Universal Fittings mechanically join to any water supply tubing using a special locking ring and an elastomeric seal to make a quick, easy and watertight connection. Simply insert tubing and hand-tighten.

Includes one each of the following:

- ◆ Tee 1/2" OD x 5/8" (166209)
- ◆ CPVC Connect Tube 5/8" OD x 3"
- ◆ Straight Supply Valve
1/2" ID - 5/8" OD x 1/4" ID - 3/8" OD (166224)
- ◆ Olefin Riser 3/8" OD x 1/4" ID x 60"



0166227

No-Burst Dishwasher Connections

48" of the highest burst strength available—250 ft. of stainless steel wire per foot; stainless ferrules are extra long with added crimps for security. Tough, non-toxic polymer core resists chlorine and chloramines. Ample inside diameter for high flow capacity. Captive cone washers seal tightly, can't fall out. Exceptional flexibility for easy install. Won't kink or crease, even in the tightest spaces. Heavy-duty brass hex nuts are easy to grip with fingers or tools and nickel plated for durability. Code approved, exceeding all plumbing code requirements. Exceeds all requirements for flexible water connectors as defined by ASME A112.18.6 and CSA B125. 5-year warranty.

0375007

Specifications Subject to Change without Notice



GE Washer

3.2 Cu. Ft. Super Capacity

- ◆ 3.2 cu. ft. super plus ExtrAction™ wash basket—Offers increased surface area to “squeeze” more water from clothes during the spin cycle, resulting in reduced dry times
- ◆ HydroWave™ wash system—Has variable speeds to match the wash action to the clothing type; Longer, slower travel through the water improves cleaning performance and is gentler on your clothes
- ◆ Four wash/spin speed combinations—Speeds vary according to fabric type for better clothes care
- ◆ 17 wash cycles—A cycle for every laundry load and need
- ◆ Four wash/rinse temperatures—Washer cleans at the exact temperature needed to remove dirt and reduce wear
- ◆ Four water levels—Offers water and energy savings

Dimensions

Height: 42"
 Width: 27"
 Depth: 25 1/2"

Weight

Approx. 145 lbs.
 Approx. Ship 155 lbs.

0141030 White Washer



GE Washer & Dryer Set

Electric Washer & Dryer Set

Set Includes: 8' UL Vent Kit and a 4' cord.

0140052 White Set

GE Electric Dryer

6.0 Cu Ft Extra Large Capacity Dryer

Dimensions

Height: 42"
 Width: 27"
 Depth: 25 1/2"

0141034 White/White Dryer

Weight

Approx. 100 lbs.
 Approx. Ship 110 lbs.

GE Gas Dryer

6.0 Cu Ft Extra Large Capacity Dryer

Dimensions

Height: 42"
 Width: 27"
 Depth: 25 1/2"

0141028 White/White Dryer

Weight

Approx. 105 lbs.
 Approx. Ship 115 lbs.

- ◆ 6.0 cu. ft. extra-large capacity—Handles large-size items and family-size loads
- ◆ DuraDrum™—Provides long-lasting dependability and durability
- ◆ Four heat selections—Provide the right temperature for the right drying results
- ◆ Six dry cycles—Flexible options for drying, dewrinkling and fluffing
- ◆ Auto Dry—Uses thermostats to monitor air temperature and reduce fabric wear
- ◆ Fixed End-Of-Cycle Signal—Alerts you when the cycle is done, saving time between loads

HOTPOINT Washer

3.2 Cu. Ft. Extra-Large Capacity Washer

- ◆ 3.2 cu.ft. super PermaTur® II wash basket— Designed to maintain a long-lasting stain-free appearance with bright white interior
- ◆ One Wash/Spin Speed—Provides reliable cleaning performance for regular clothes
- ◆ Nine wash cycles—Convenient settings for everyday fabrics
- ◆ Three wash/rinse temperatures—Offer better wash results and longer fabric life
- ◆ Three Water Levels—Minimize water waste
- ◆ FlexCare™ Agitator—Provides gentle, yet effective washing action



Dimensions

Height: 42"

Width: 27"

Depth: 25 1/2"

Weight

Approx. 142 lbs.

Approx. Ship 152 lbs.

0140901 White Washer

HOTPOINT Washer & Dryer Set

White Electric Washer & Dryer Set

0140899 With vinyl louvered kit & 4' cord.

0140050 With 8' UL vent kit & 4' cord.

HOTPOINT Electric Dryer

6.0 Cu Ft Extra Large Capacity Dryer

Dimensions Weight

Height: 42"

Width: 27"

Depth: 25 1/2"

Approx. 100 lbs.

Approx. Ship 110 lbs.

0141001 White

HOTPOINT Gas Dryer

6.0 Cu Ft Extra Large Capacity Dryer

Dimensions Weight

Height: 42"

Width: 27"

Depth: 25 1/2"

Approx. 105 lbs.

Approx. Ship 115 lbs.

0141026 White

- ◆ 6.0 Cubic Foot, Extra-large capacity—Handles your large-size items and family-size loads
- ◆ DuraDrum™—Provides long-lasting dependability and durability
- ◆ Three heat selections—Offer a choice of drying temperatures for better fabric care
- ◆ Three dry cycles—Simple options for the reliable drying performance
- ◆ Quiet-By-Design™—Engineered for quiet operation
- ◆ Reverse-A-Door—Offers added installation flexibility

0141208
LP Change Over Kit

Outdoor Improvements
 Anchors & Set-Up Material
 Doors & Windows
 Coatings & Cleaners
 Appliances
 Tools & Hardware
 Carpet & Flooring
 Electrical
 Plumbing
 Towing & Safety
 Heating & Cooling

Venting Kit w/ Duct

4" louvered vent in white finish, aluminum tailpiece, 5-foot vinyl duct, 2 clamps. Boxed. 6/Ctn.



0141201

Wide Mouth Vent Hood

Wide mouth vent hood with white finish. 4". 25/Ctn.



0141203

Vent w/Tailpiece

Energy efficient louver vent hood automatically opens and closes with dryer operation. Complete with hood (white), aluminum tailpiece, flange and plastic clamp.



0141206

Flexible Vent Hose



All hoses are 4" diameter.



White Vinyl

0141202 5', Bag; 12/Ctn.

0141205 50', Boxed

Aluminum Foil

0141200 5' Flex., Bulk

0141199 25' Flex., Bulk

0141195 8' - U.L. Appr.

0141196 5' - U.L. Appr.

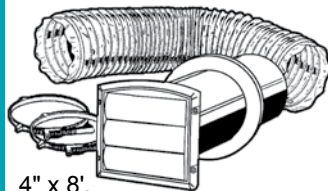
Rigid

4" Aluminum Duct
 15' Compressed.

0141197 retail ctn



Transitional Vent Kit



4" x 8".

UL Approved dryer vent kit.

0141204



Outlet Box



Universal for right- or left-hand drain. Rust-proof, beige. Holes 3" apart.

OS:

11-3/4" W x 10" H x 2-1/2" D.

Cutout:

9-1/8" W x 7-1/4" H x 2-1/2" D.

0440206



Washing Machine Valve

One-piece, brass body. Tailpiece: 1". Combination .5 solder or threaded connection with locknut.

1/2"; 6/Ctn.

0379915

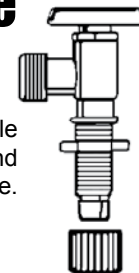


Washing Machine Valve



Washing Machine Valve 1 1/2" x 3/4" Male Garden Hose. This will work on PEX and Polybutylene Pipe. This is a directional valve. The water must flow with the arrow.

0164404 1/2" ID



Half Turn Valves



Long shank MIP valve with easy on/off control and color-coded handles. Forged brass construction eliminates porosity problems of traditional cast valves. UPC & CSA listed.

0376905 Blue

0376906 Red

Drain Hose (for G.E. & Hotpoint)

58" L. Fits G.E. & Hotpoint extra-large capacity washers 0141030 and 0141031.



0440055

Washing Machine Hose

High pressure hose with female ends. Designed to replace the hot or cold hose on washing machines. Fits all standard threaded faucets. 5' heavy duty reinforce rubber hose. High pressure tested. 12/Ctn.



0440050

4-Wire Dryer Cable



Round rubber jacketed wire, molded-on plug. Black, 4-wire for mobile homes. 4', 30 AMP. 12/Ctn.

0220307

E-17

Dryer Receptacle

3 pole, 4-wire, 30-AMP, 125/250-volt dryer receptacle with "Quick-Lok" terminals. 50/Ctn.



0224301

Clamps



4" plastic adjustable clamps. 2 per polybag.

0141198 24/Ctn.